



Greenfields



Harlequin Court, Arla Place

SOUTH RUISLIP

Guide Price £390,000

Harlequin Court

Arla Place, SOUTH RUISLIP

Stylish 2-bed, 2-bath apartment in Ruislip, 73.0 m² / 785 ft² of contemporary living with a private balcony, open-plan lounge-kitchen, and a dedicated utility room.

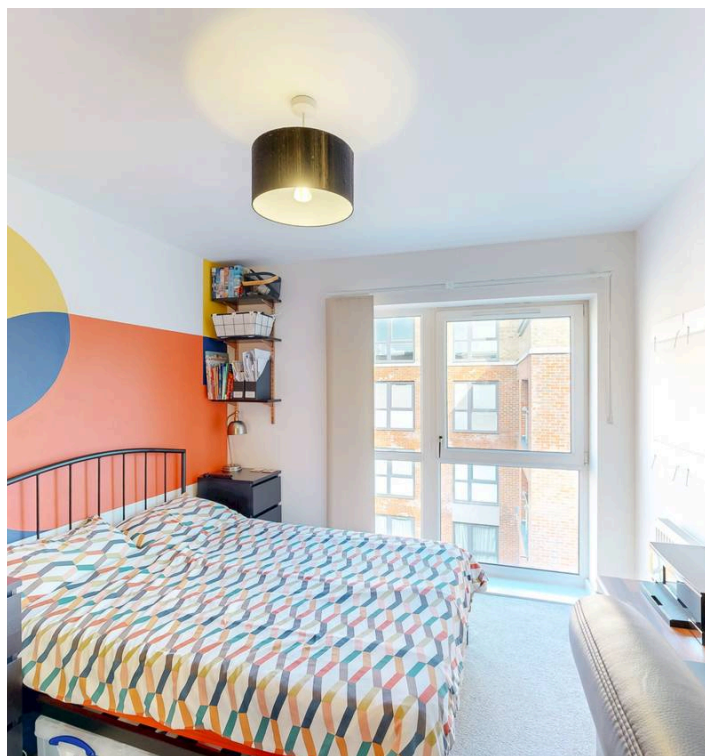
Council Tax band: D

Tenure: Leasehold

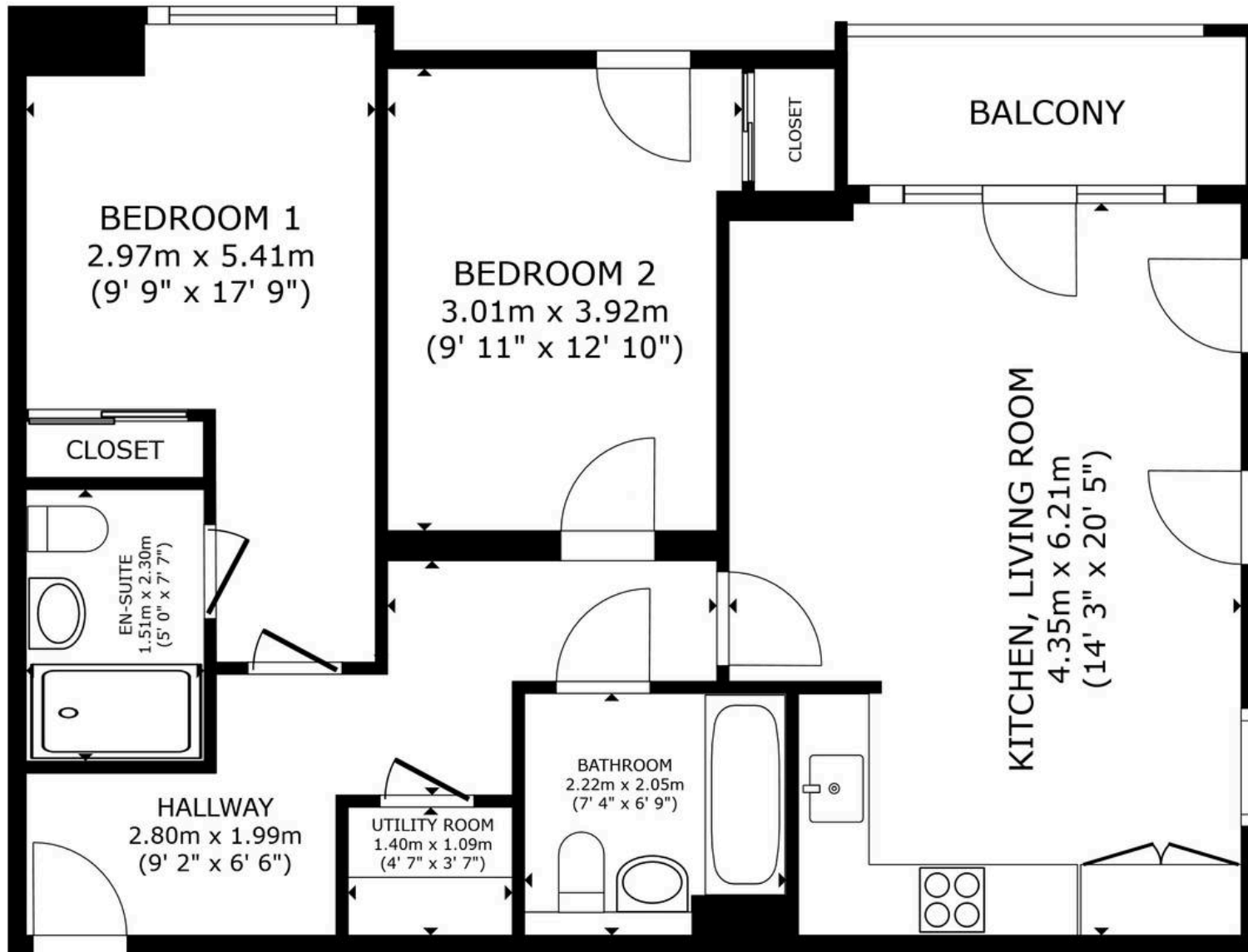
EPC Energy Efficiency Rating: B

EPC Environmental Impact Rating: B

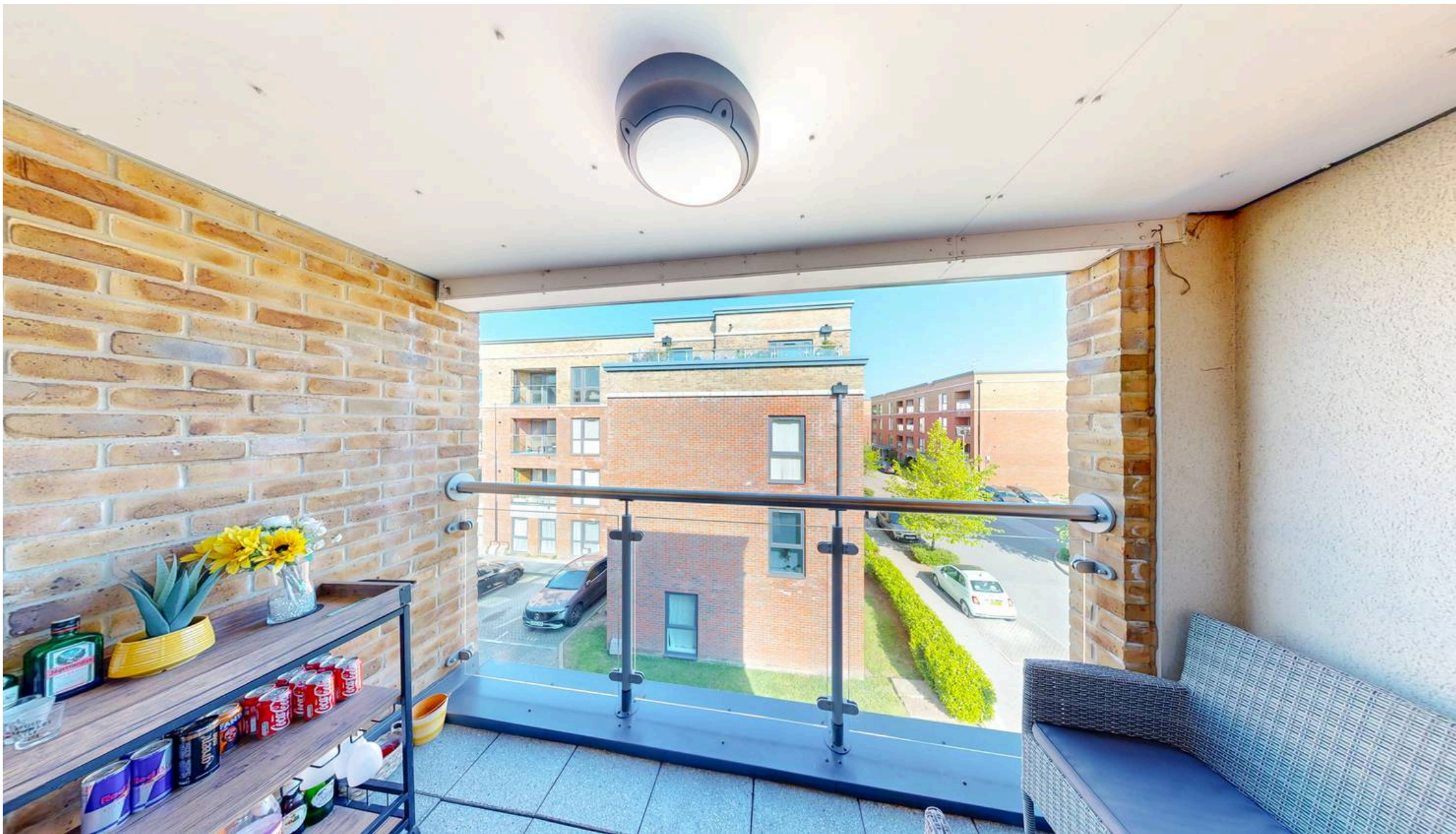
- 2 bedroom 2 bathroom apartment
- Open plan kitchen living area
- Modern kitchen with integrated appliances
- Private balcony with glass balustrade
- Allocated parking
- Modern walk-in shower
- Luxury bathroom
- Built-in mirrored wardrobes
- Ample natural light throughout
- Communal outdoor space



Greenfields



FLOOR PLAN



Greenfields

115 Victoria Road, Ruislip - HA4 9BN

01895 628560 • info@greenfieldsproperty.co.uk • www.greenfieldsproperty.co.uk

These particulars, whilst believed to be accurate are set out as a general outline only for guidance and do not constitute any part of an offer or contract. Intending purchasers should not rely on them as statements of representation of fact, but must satisfy themselves by inspection or otherwise as to their accuracy.