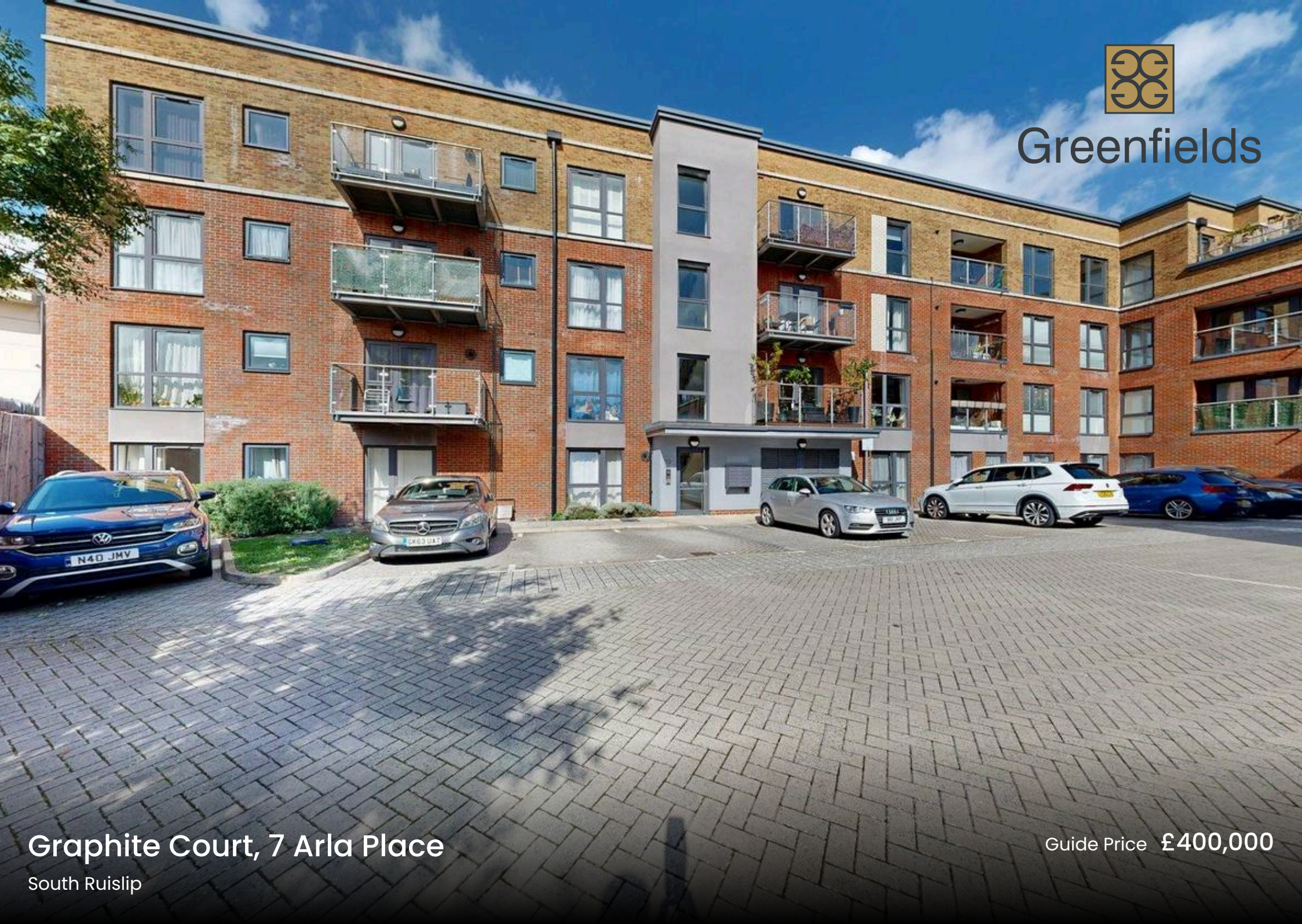




Greenfields



Graphite Court, 7 Arla Place

South Ruislip

Guide Price £400,000



# Graphite Court

## South Ruislip

Stunning first floor apartment with spacious living area, 2 bedrooms, sleek kitchen, 2 bathrooms, charming balcony, allocated parking. Secure investment with 118-year lease. Convenient location near amenities. Ideal modern urban retreat. Contact for viewing.

Council Tax band: D

Tenure: Leasehold

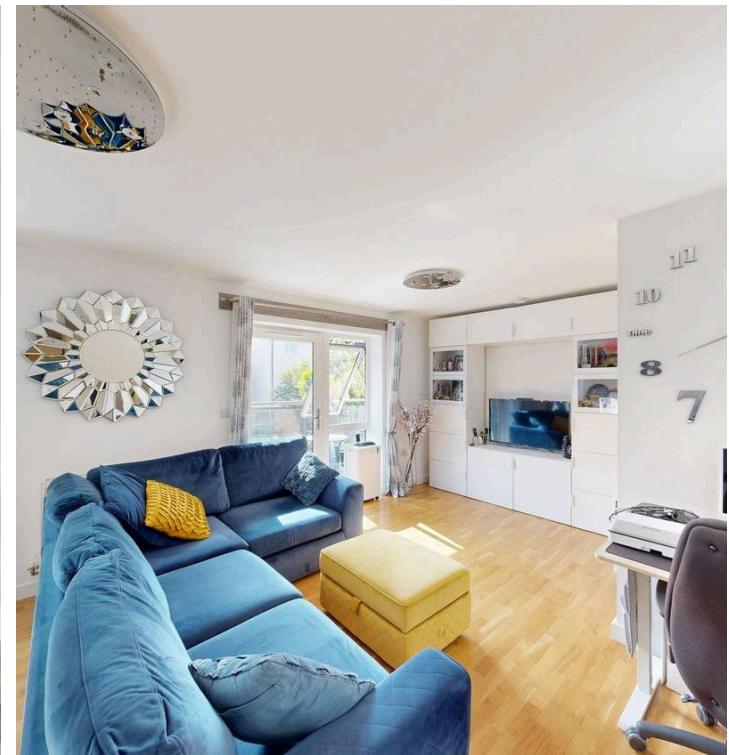
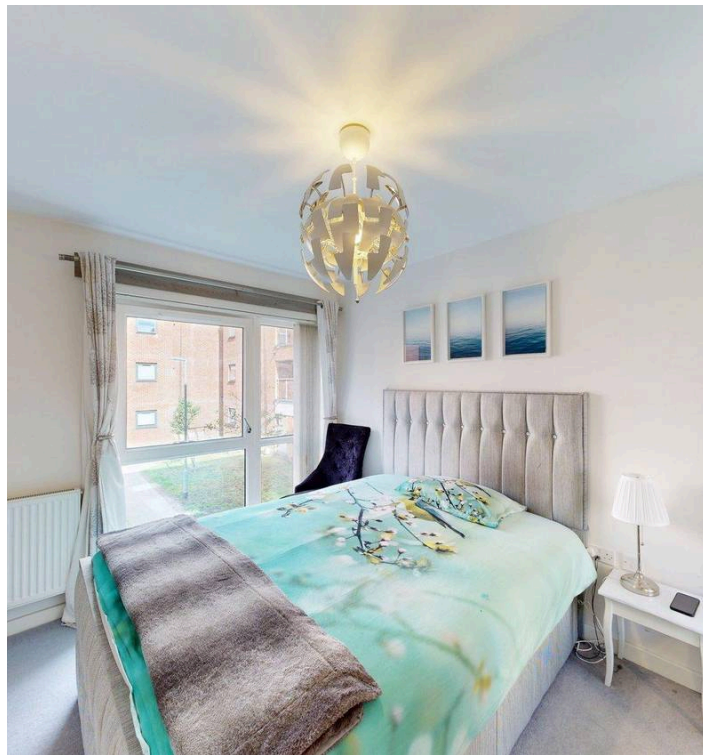
EPC Energy Efficiency Rating: B

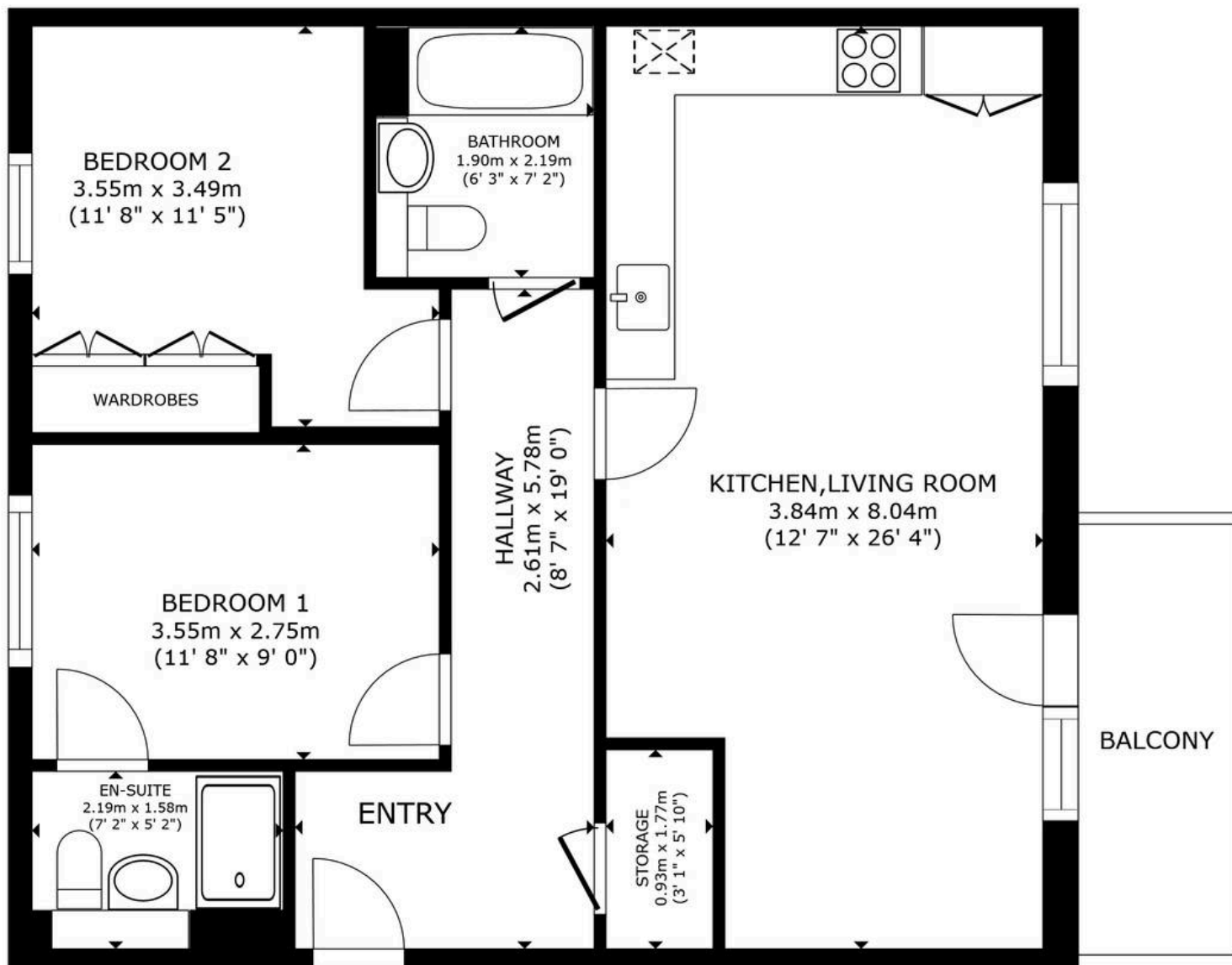
EPC Environmental Impact Rating: A

- Two Bedrooms
- Two Bathrooms
- First Floor Apartment
- Modern Kitchen
- Open Plan Living
- Balcony
- Allocated Parking
- Leasehold (118 Years Remaining)
- 764 Sq Ft (71 Sq M)



Greenfields





FLOOR PLAN





## Greenfields

115 Victoria Road, Ruislip - HA4 9BN

01895 628560 • [info@greenfieldsproperty.co.uk](mailto:info@greenfieldsproperty.co.uk) • [www.greenfieldsproperty.co.uk](http://www.greenfieldsproperty.co.uk)

These particulars, whilst believed to be accurate are set out as a general outline only for guidance and do not constitute any part of an offer or contract. Intending purchasers should not rely on them as statements of representation of fact, but must satisfy themselves by inspection or otherwise as to their accuracy.