



Greenfields



Chartwell Close, Greenford

Greenford

Guide Price £200,000

Chartwell Close

Greenford, Greenford

Delightful ground floor one-bedroom flat with allocated parking and serene communal gardens. Close to amenities, dining, and public transport. Thoughtful design for peaceful, hassle-free living in a sought-after location.

Council Tax band: B

Tenure: Leasehold

EPC Energy Efficiency Rating: D

EPC Environmental Impact Rating: E

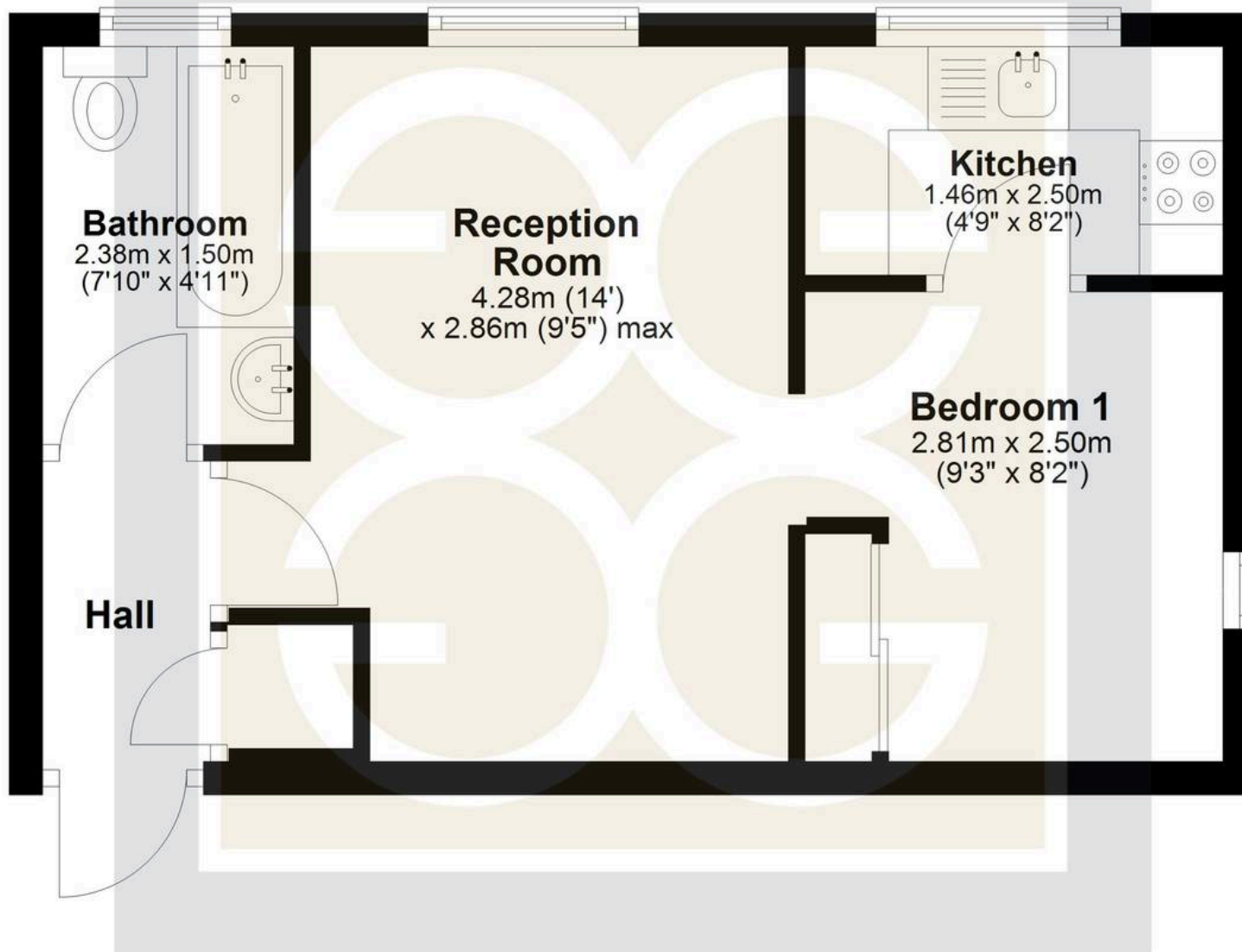
- One Bedroom
- Ground Floor
- Kitchen
- Bathroom
- Allocated parking
- Communal gardens



Greenfields

Ground Floor

Approx. 30.2 sq. metres (325.1 sq. feet)



Hall

Kitchen

1.46m x 2.50m
(4'9" x 8'2")

Reception Room

4.28m (14')
x 2.86m (9'5") max

Bedroom 1

2.81m x 2.50m
(9'3" x 8'2")

Bathroom
2.38m x 1.50m
(7'10" x 4'11")

Greenfields

For illustrative purposes only. Not to scale. Copyright Greenfields Property
Plan produced using PlanUp.



Greenfields

115 Victoria Road, Ruislip – HA4 9BN

01895 628560 • info@greenfieldsproperty.co.uk • www.greenfieldsproperty.co.uk

These particulars, whilst believed to be accurate are set out as a general outline only for guidance and do not constitute any part of an offer or contract. Intending purchasers should not rely on them as statements of representation of fact, but must satisfy themselves by inspection or otherwise as to their accuracy.