



207 Beverley Road, Ruislip

Ruislip

Guide Price £700,000 – £720,000

Beverley Road

Ruislip, HA4

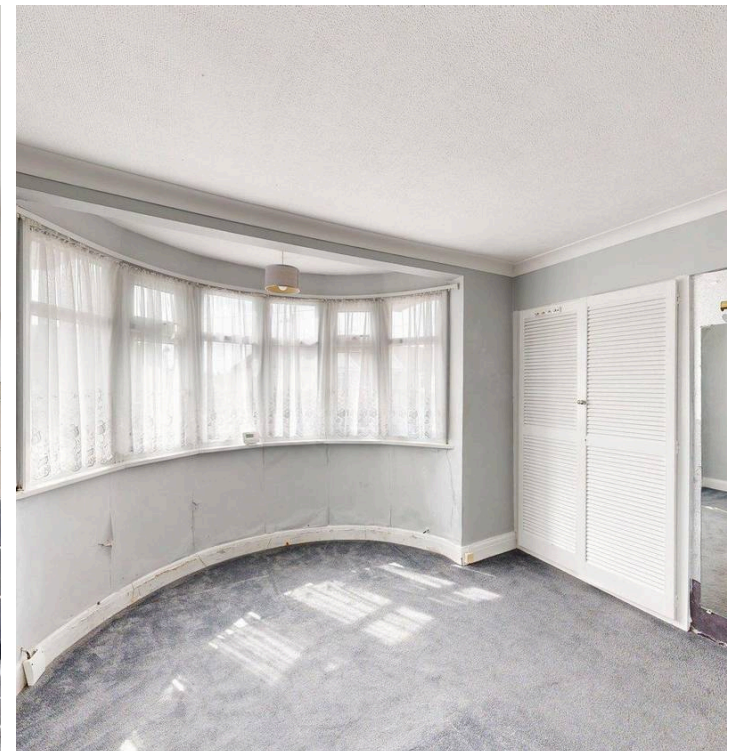
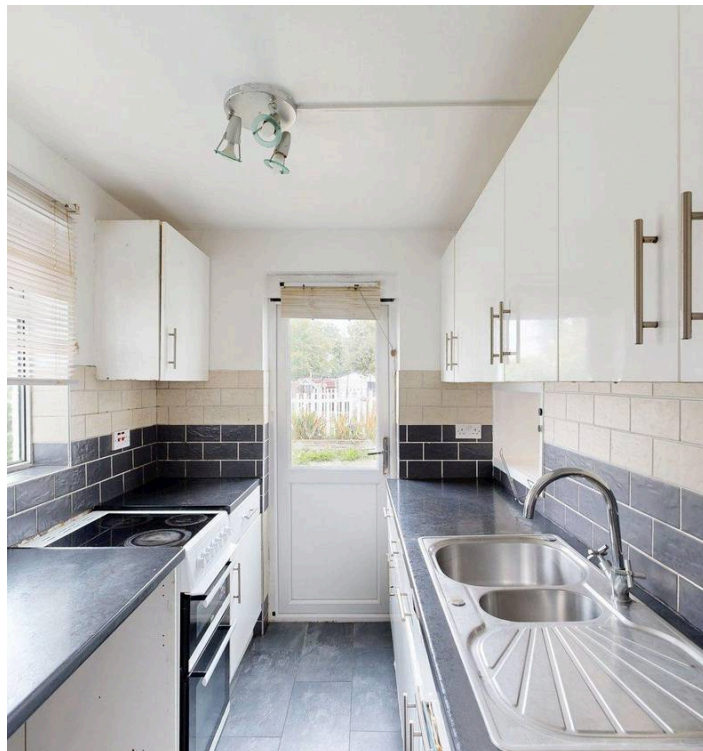
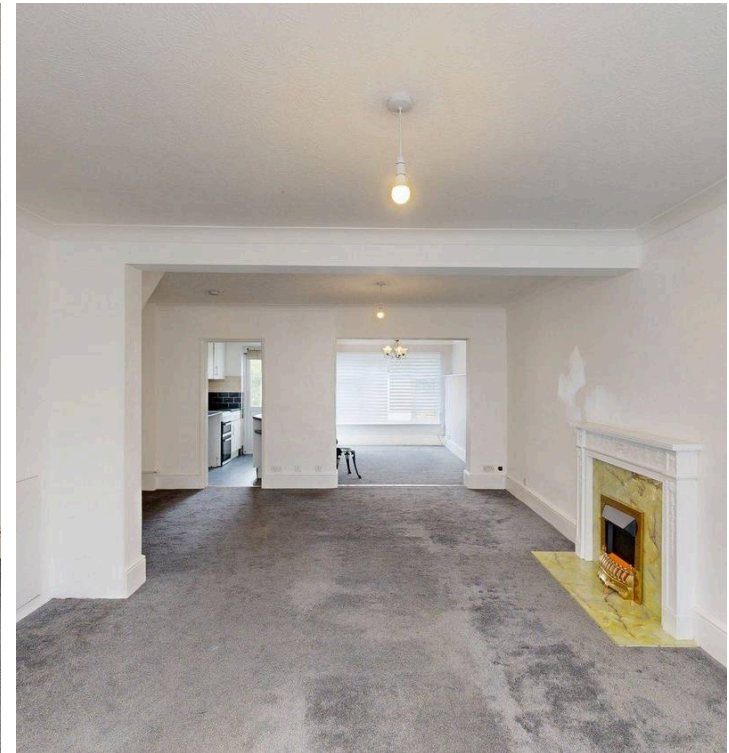
Council Tax band: E

Tenure: Freehold

EPC Energy Efficiency Rating: D

EPC Environmental Impact Rating: D

- Spacious open plan living area
- Modern kitchen with integrated oven
- Drive way
- Large bay windows
- Private and spacious garden
- Multiple patio areas for outdoor seating
- Ample natural light
- Two Bathrooms



Greenfields



FLOOR 1



FLOOR 2



GROSS INTERNAL AREA
 FLOOR 1 63.8 m² (687 sq.ft.) FLOOR 2 48.8 m² (525 sq.ft.)
 EXCLUDED AREAS : ENTRY 1.6 m² (18 sq.ft.) GARAGE 24.0 m² (258 sq.ft.)
 TOTAL : 112.6 m² (1,212 sq.ft.)
 SIZES AND DIMENSIONS ARE APPROXIMATE, ACTUAL MAY VARY.



Greenfields





Greenfields

115 Victoria Road, Ruislip - HA4 9BN

01895 628560 • info@greenfieldsproperty.co.uk • www.greenfieldsproperty.co.uk

These particulars, whilst believed to be accurate are set out as a general outline only for guidance and do not constitute any part of an offer or contract. Intending purchasers should not rely on them as statements of representation of fact, but must satisfy themselves by inspection or otherwise as to their accuracy.