



3 Ardley Close, Ruislip

Ruislip

£2,500 pcm



# 3 Ardley Close

Ruislip, Ruislip

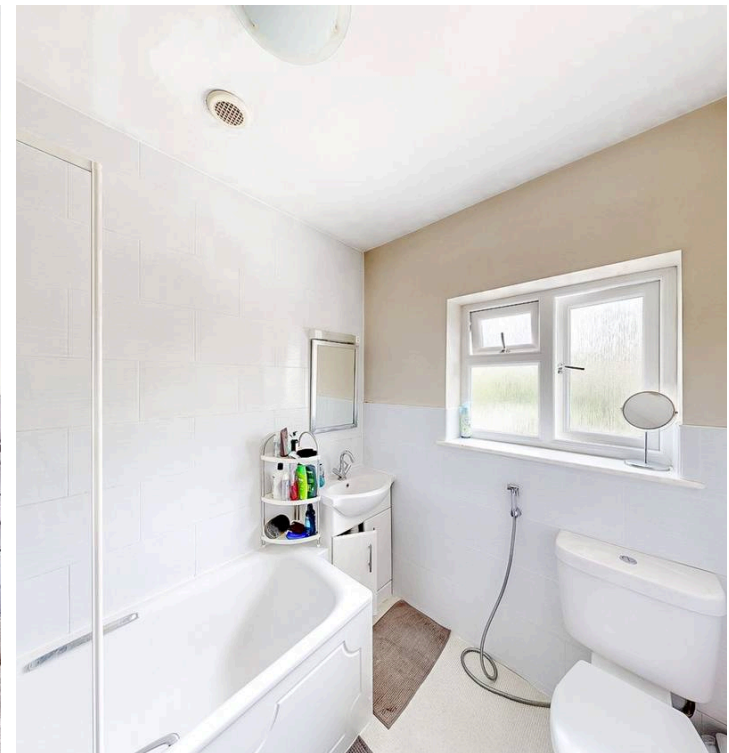
Council Tax band: E

Tenure: Freehold

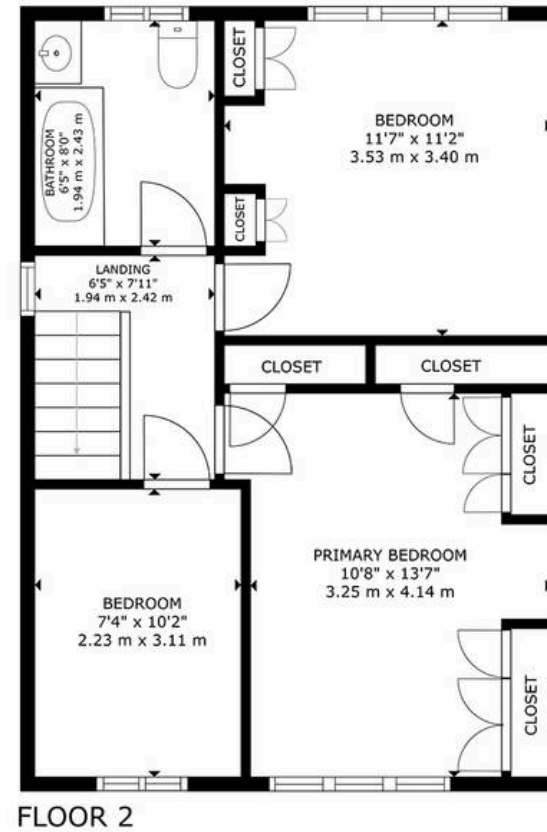
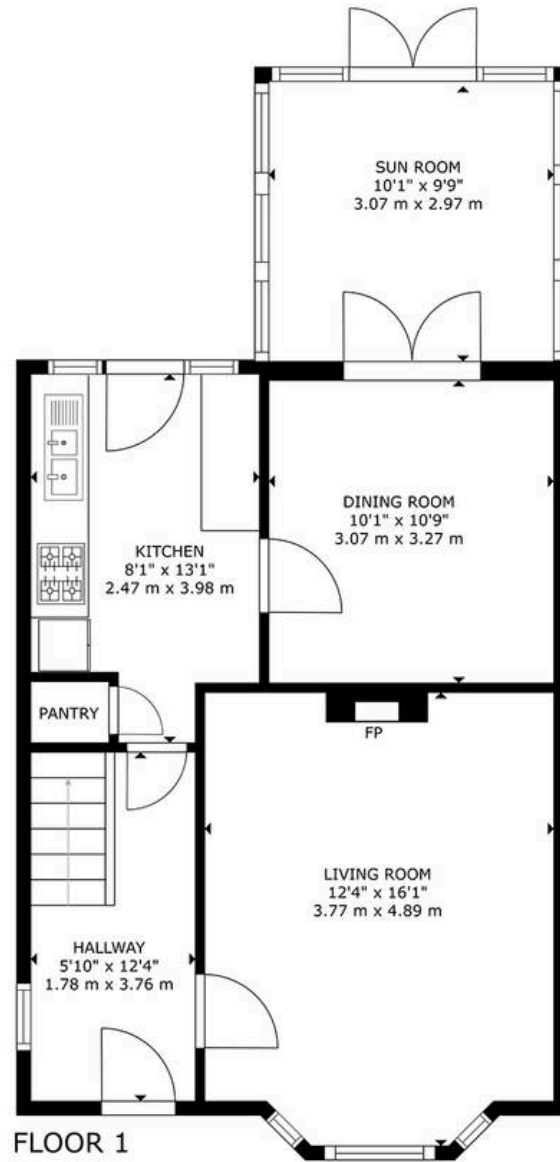
EPC Energy Efficiency Rating: D

EPC Environmental Impact Rating: E

- Spacious driveway with off-road parking
- Beautifully landscaped garden
- Modern kitchen with integrated appliances
- French doors to outdoor space
- Bright conservatory with garden access
- Large windows throughout
- Classic fireplace in living room
- Built-in wardrobes in bedrooms
- Spacious patio and lawn garden
- Contemporary bathroom with bath and shower



Greenfields







## Greenfields

115 Victoria Road, Ruislip - HA4 9BN

01895 628560 • [info@greenfieldsproperty.co.uk](mailto:info@greenfieldsproperty.co.uk) • [www.greenfieldsproperty.co.uk](http://www.greenfieldsproperty.co.uk)

These particulars, whilst believed to be accurate are set out as a general outline only for guidance and do not constitute any part of an offer or contract. Intending purchasers should not rely on them as statements of representation of fact, but must satisfy themselves by inspection or otherwise as to their accuracy.