



15 Garden Close, Ruislip

Ruislip

Guide Price £290,000

Green

15 Garden Close

Ruislip, Ruislip

Delightful upper floor flat in Ruislip close to High Street & underground station. 2 bedrooms, welcoming reception, thoughtful bathroom, residents parking. Ideal for growing families. Vibrant community with shops, schools, parks & transport links. Perfect blend of comfort & convenience awaits. No upper chain.

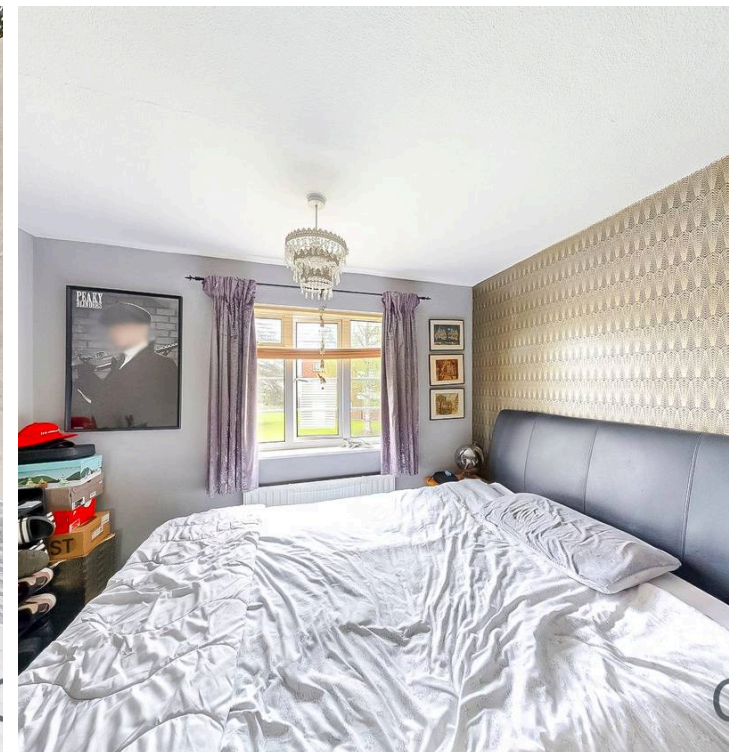
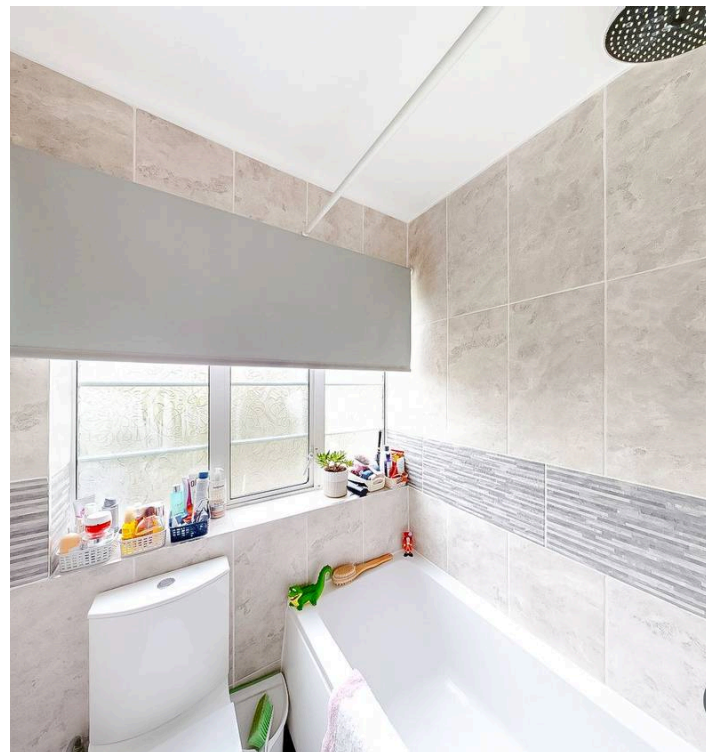
Council Tax band: C

Tenure: Leasehold

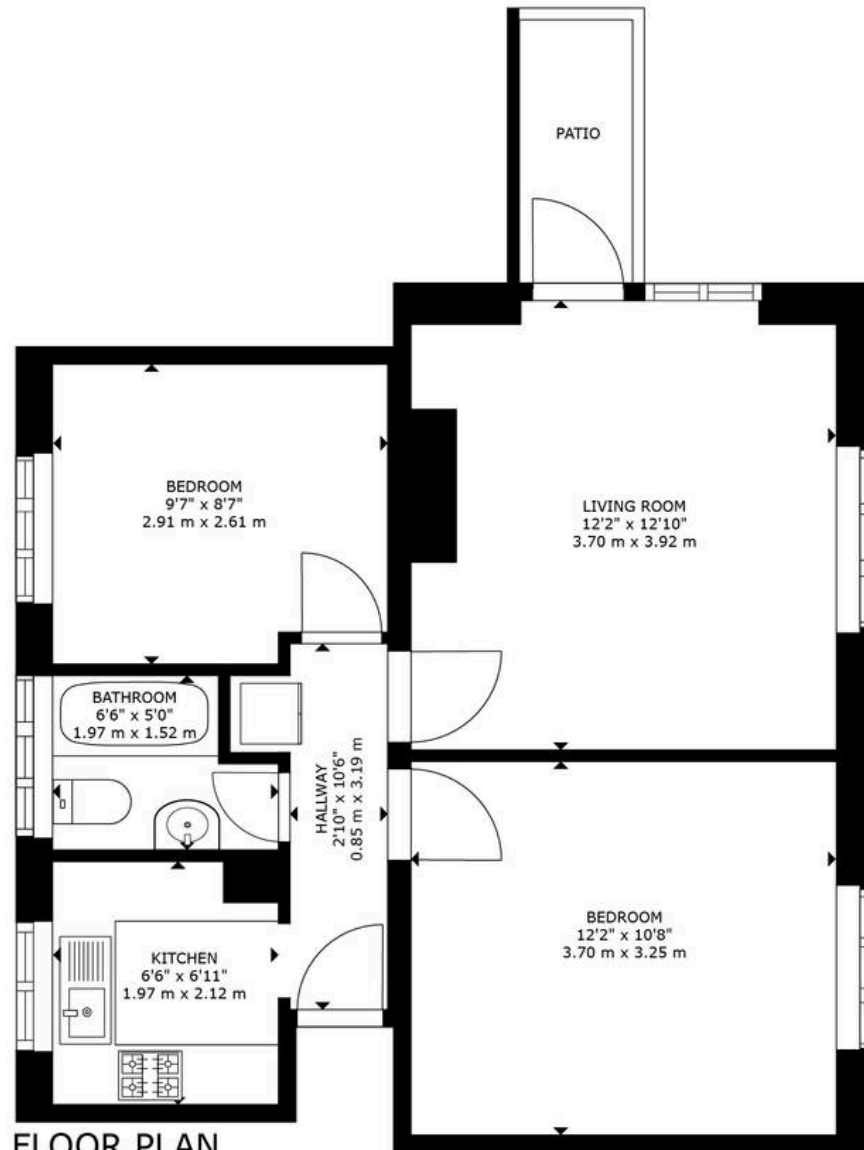
EPC Energy Efficiency Rating: C

EPC Environmental Impact Rating: C

- TWO BEDROOMS
- NO UPPER CHAIN
- CLOSE TO RUSILP STATION
- RESIDENTS PARKING
- GARDEN
- MODERN BATHROOM
- MODERN KITCHEN
- BALCONY
- LARGE LOUNGE



Greenfields



FLOOR PLAN



Greenfields

Greenfields, 115 Victoria Road – HA4 9BN

01895 628560 • info@greenfieldsproperty.co.uk • www.greenfieldsproperty.co.uk

These particulars, whilst believed to be accurate are set out as a general outline only for guidance and do not constitute any part of an offer or contract. Intending purchasers should not rely on them as statements of representation of fact, but must satisfy themselves by inspection or otherwise as to their accuracy.