



13 Graphite Court, 8 Arla Place

Ruislip

Guide Price £495,000

13 Graphite Court

Ruislip

Stunning 3-bed apartment in Arla Place, South Ruislip HA4. Modern build, 947 sq ft, ideal for families or professionals. Open-plan living, allocated parking, EV charging, bike room and great transport links. Don't miss out on this attractive home!

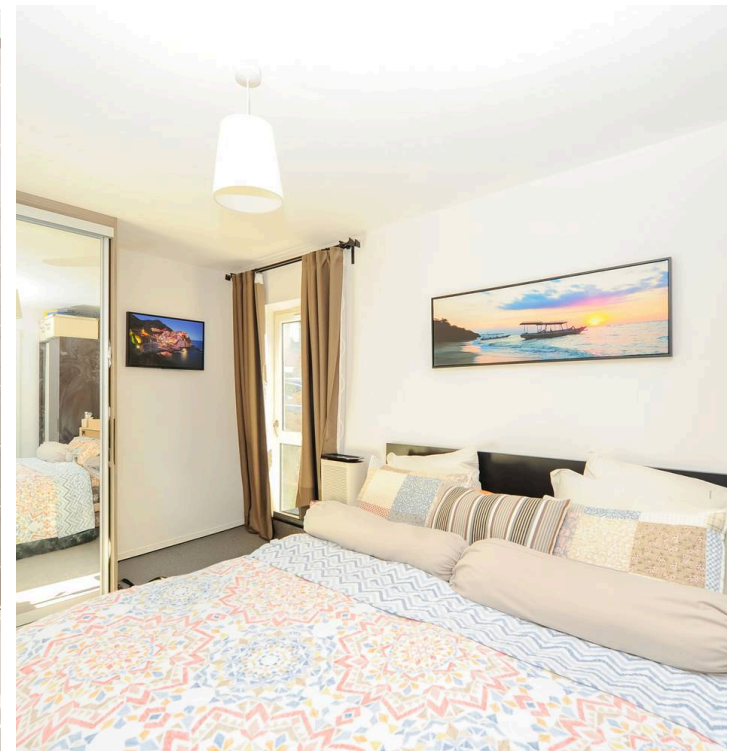
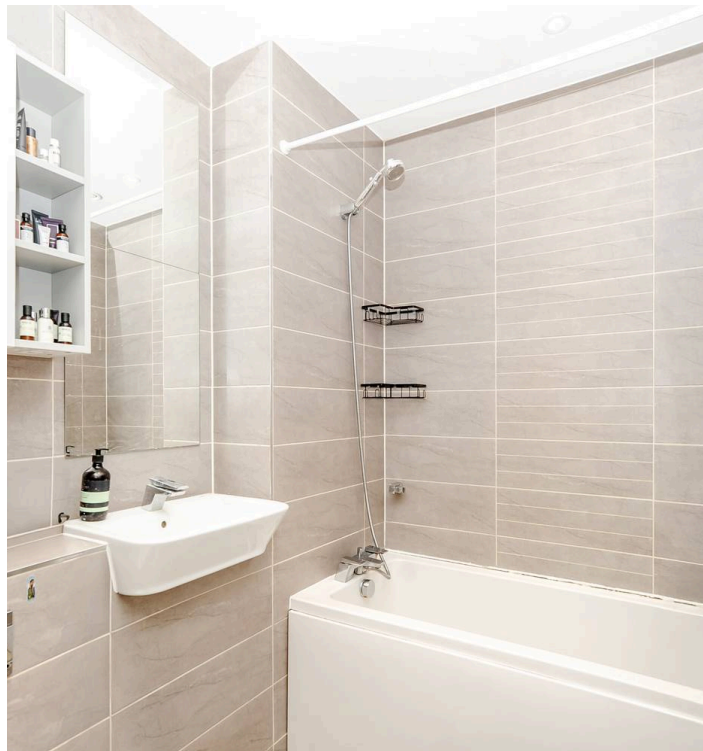
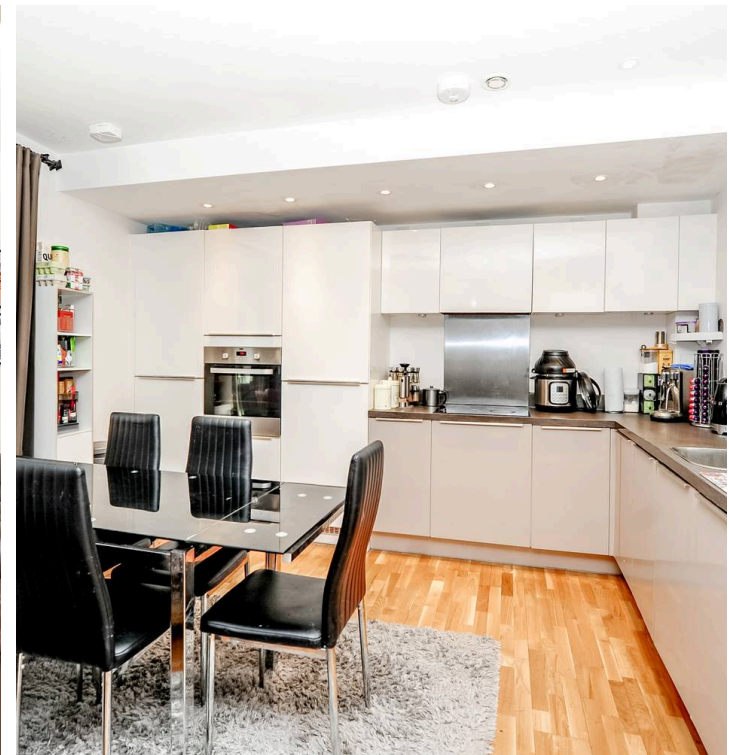
Council Tax band: D

Tenure: Leasehold

EPC Energy Efficiency Rating: B

EPC Environmental Impact Rating: A

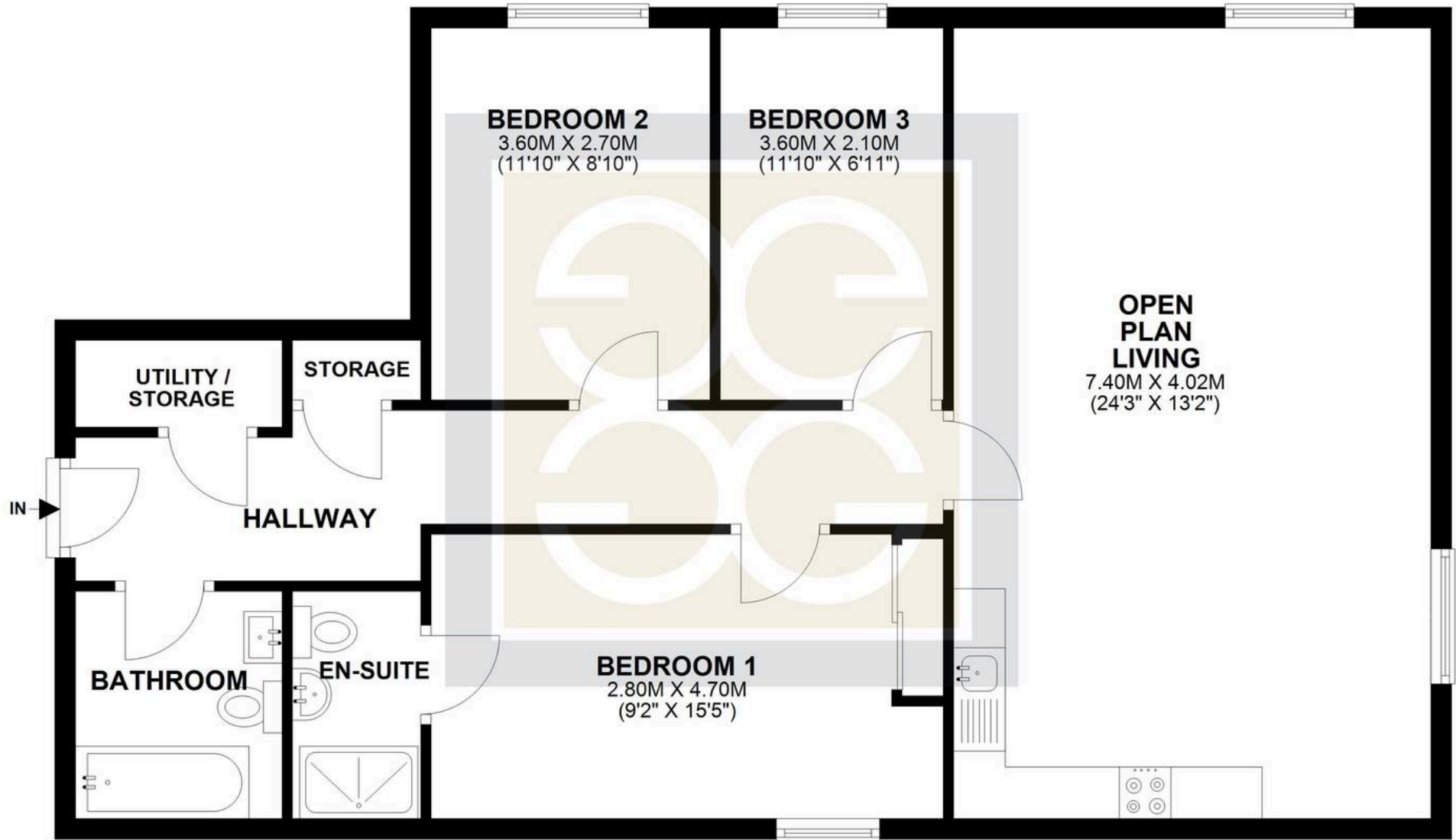
- Modern Ground Floor Apartment
- Three Bedrooms
- Two Modern Bathrooms
- Large Open Plan Living Room
- Modern Fitted Kitchen
- Allocated Parking
- EV charge points
- Very Close To Station



Greenfields

GROUND FLOOR

APPROX. 87.9 SQ. METRES (946.7 SQ. FEET)



TOTAL AREA: APPROX. 87.9 SQ. METRES (946.7 SQ. FEET)

For illustrative purposes only. Not to scale. Copyright Greenfields Property
Plan produced using PlanUp.



Greenfields



Greenfields

Greenfields, 115 Victoria Road – HA4 9BN

01895 628560 • info@greenfieldsproperty.co.uk • www.greenfieldsproperty.co.uk

These particulars, whilst believed to be accurate are set out as a general outline only for guidance and do not constitute any part of an offer or contract. Intending purchasers should not rely on them as statements of representation of fact, but must satisfy themselves by inspection or otherwise as to their accuracy.