



2a St. Lawrence Drive, Pinner

Pinner

Guide Price £865,000

2a St. Lawrence Drive

Pinner, Pinner

Stunning 4-bed detached house with no upper chain in tranquil neighbourhood. Generous layout, 2 reception rooms, modern kitchen, 4 bedrooms, 2 baths. Includes off-street parking, creating a warm and welcoming atmosphere. Ideal for discerning buyers seeking a stylish family home.

Council Tax band: F

Tenure: Freehold

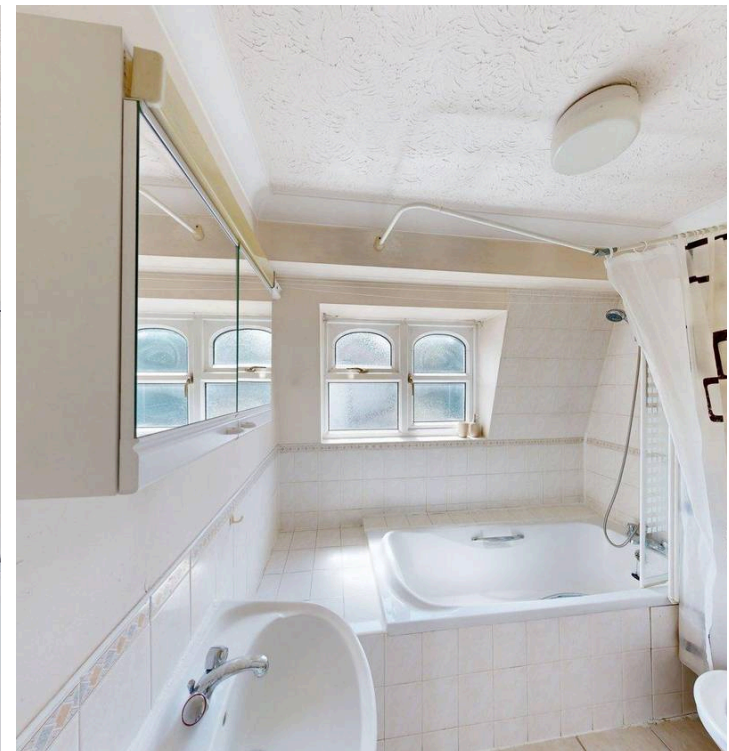
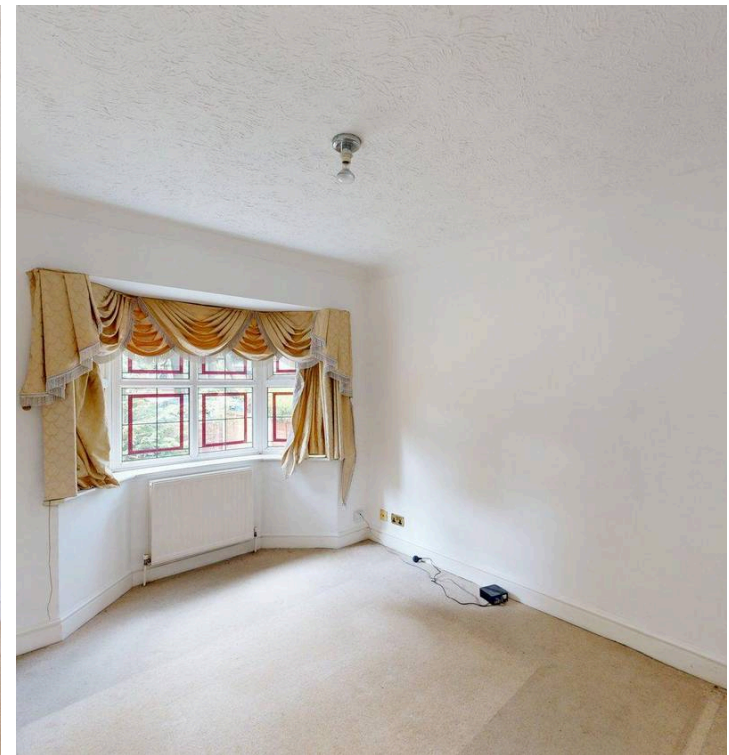
EPC Energy Efficiency Rating: E

EPC Environmental Impact Rating: E

- NO UPPER CHAIN
- Detached House
- Four Bedrooms
- Two Bathrooms
- Two Reception Rooms
- Modern Kitchen
- Spacious Hall and Landing
- Downstairs WC
- Off Street Parking

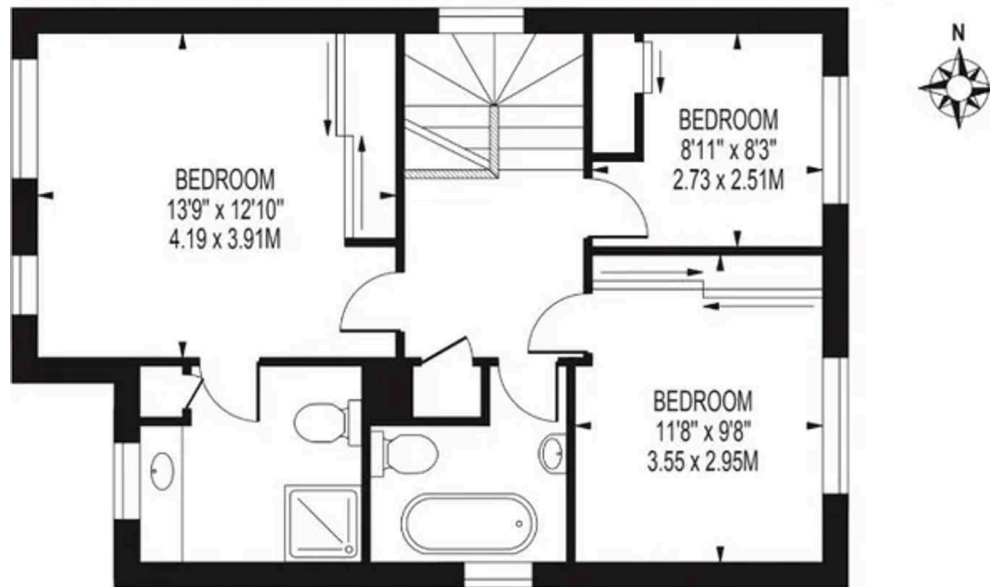


Greenfields

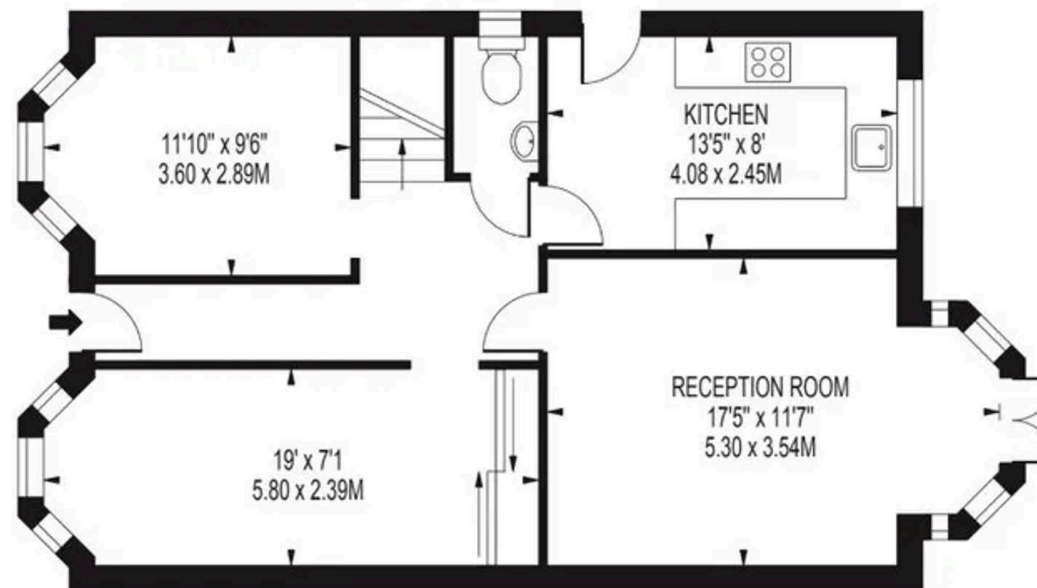


ST. LAWRENCE DRIVE

APPROXIMATE GROSS INTERNAL FLOOR AREA: 1255 SQ FT - 116.63 SQ M



FIRST FLOOR



GROUND FLOOR

FOR ILLUSTRATION PURPOSES ONLY

THIS FLOOR PLAN SHOULD BE USED AS A GENERAL OUTLINE FOR GUIDANCE ONLY AND DOES NOT CONSTITUTE IN WHOLE OR IN PART AN OFFER OR CONTRACT. ANY INTENDING PURCHASER OR LESSEE SHOULD SATISFY THEMSELVES BY INSPECTION, SEARCHES, ENQUIRIES AND FULL SURVEY AS TO THE CORRECTNESS OF EACH STATEMENT. ANY AREAS, MEASUREMENTS OR DISTANCES QUOTED ARE APPROXIMATE AND SHOULD NOT BE USED TO VALUE A PROPERTY OR BE THE BASIS OF ANY SALE OR LET.



Greenfields



Greenfields

Greenfields, 115 Victoria Road – HA4 9BN

01895 628560 • info@greenfieldsproperty.co.uk • www.greenfieldsproperty.co.uk

These particulars, whilst believed to be accurate are set out as a general outline only for guidance and do not constitute any part of an offer or contract. Intending purchasers should not rely on them as statements of representation of fact, but must satisfy themselves by inspection or otherwise as to their accuracy.