



12a Northdown Close, Ruislip

Ruislip

Guide Price £335,000



Greenfield



# 12a Northdown Close

Ruislip, Ruislip

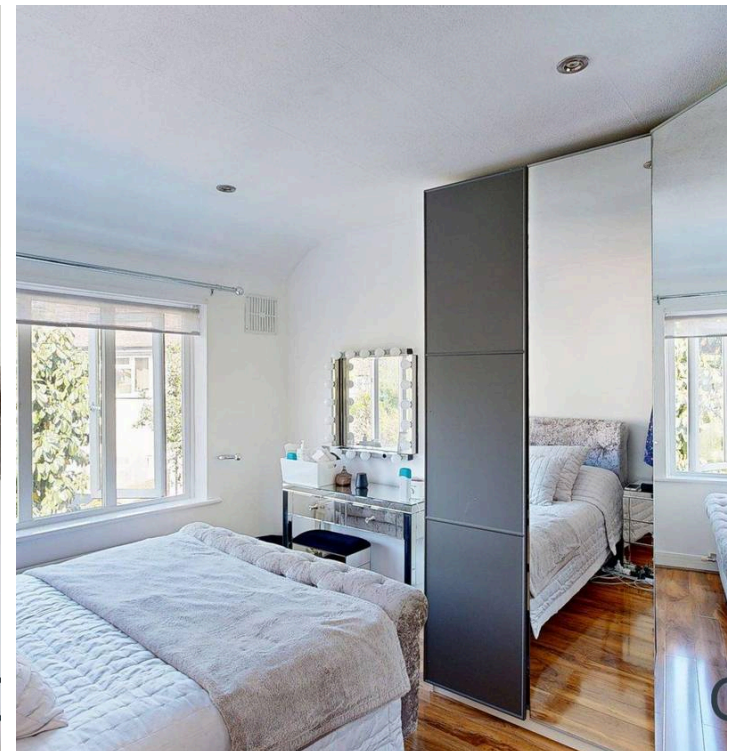
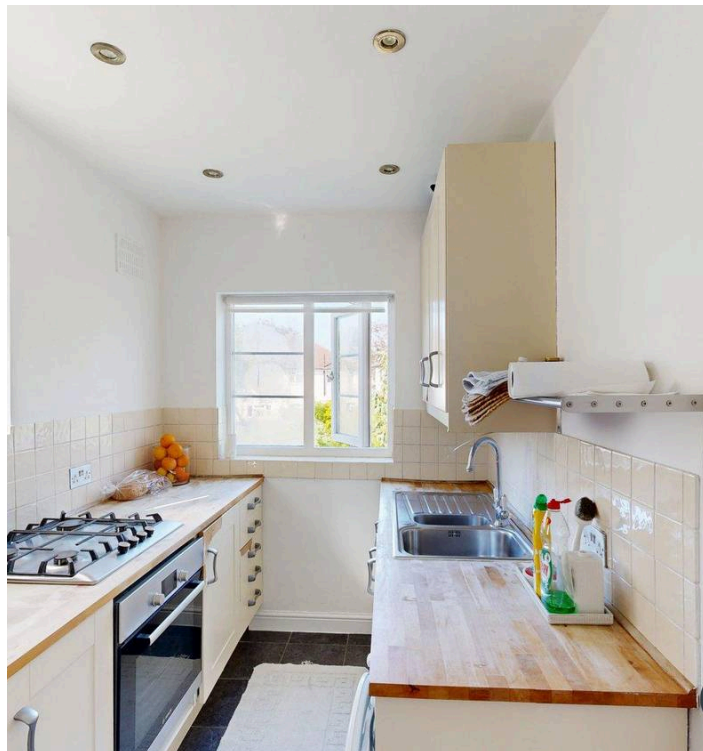
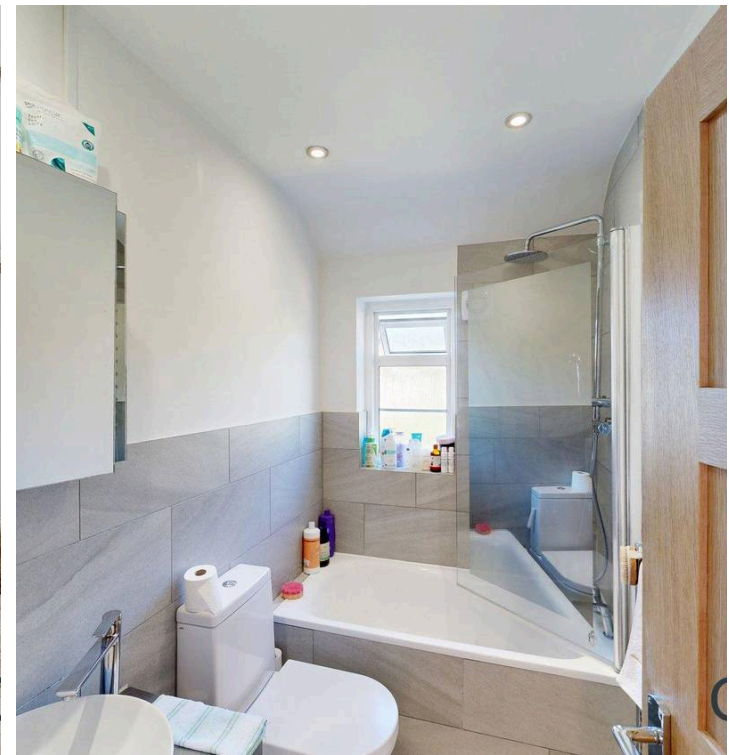
Modern 2-bed maisonette in Ruislip with private garden, bright interiors, built-in wardrobes, fireplace, and contemporary kitchen/bathroom. Ideal for low-maintenance living with great commuter links. Council Tax band: C

Tenure: Leasehold

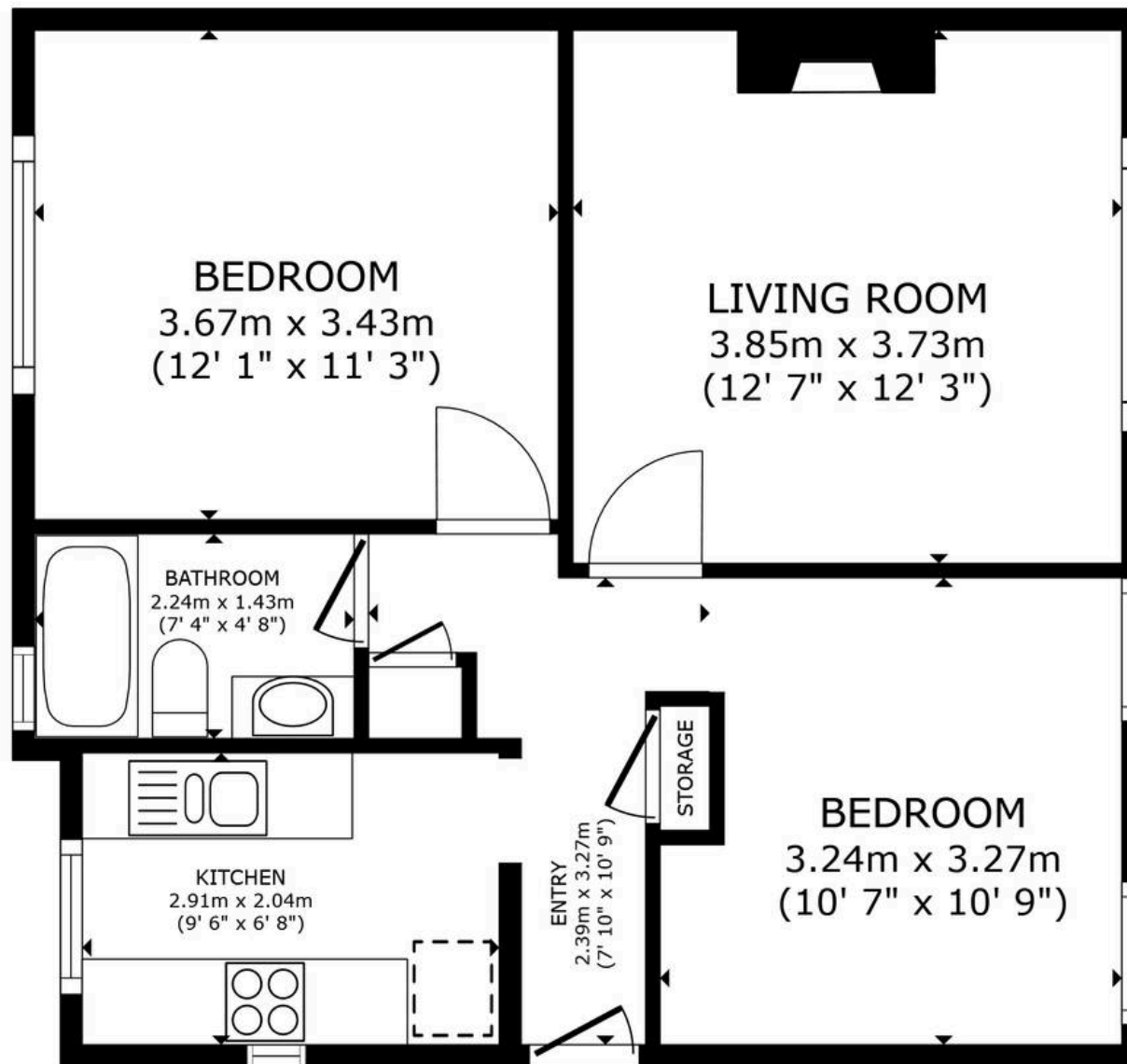
EPC Energy Efficiency Rating: C

EPC Environmental Impact Rating: C

- Two Double Bedrooms
- First Floor
- Large Living Room
- Kitchen
- Modern Bathroom
- Private Garden
- Close to tube links
- NO UPPER CHAIN



Greenfields



FLOOR PLAN





# Greenfields

Greenfields, 115 Victoria Road – HA4 9BN

01895 628560 • [info@greenfieldsproperty.co.uk](mailto:info@greenfieldsproperty.co.uk) • [www.greenfieldsproperty.co.uk](http://www.greenfieldsproperty.co.uk)

These particulars, whilst believed to be accurate are set out as a general outline only for guidance and do not constitute any part of an offer or contract. Intending purchasers should not rely on them as statements of representation of fact, but must satisfy themselves by inspection or otherwise as to their accuracy.