



Greenfields
01895 628560
FOR SALE

334a West End Road, Ruislip
Ruislip

In Excess of £335,000 | £1,000 PCM



334a West End Road

Ruislip, Ruislip

Charming 2-bed first floor maisonette in a vibrant community. Welcoming reception room, stylish bathroom, and great location near amenities and transport links. Ideal for first-time buyers or investors seeking a delightful home with modern comforts.

Council Tax band: C

Tenure: Leasehold

- No service charge
- Peppercorn ground rent

EPC Energy Efficiency Rating: D

EPC Environmental Impact Rating: D

- NO UPPER CHAIN
- Two bedrooms
- Bright & airy living room
- Modern fitted kitchen
- Contemporary bathroom
- Private entrance
- Gas central heating & double glazing
- Private garden
- Balcony



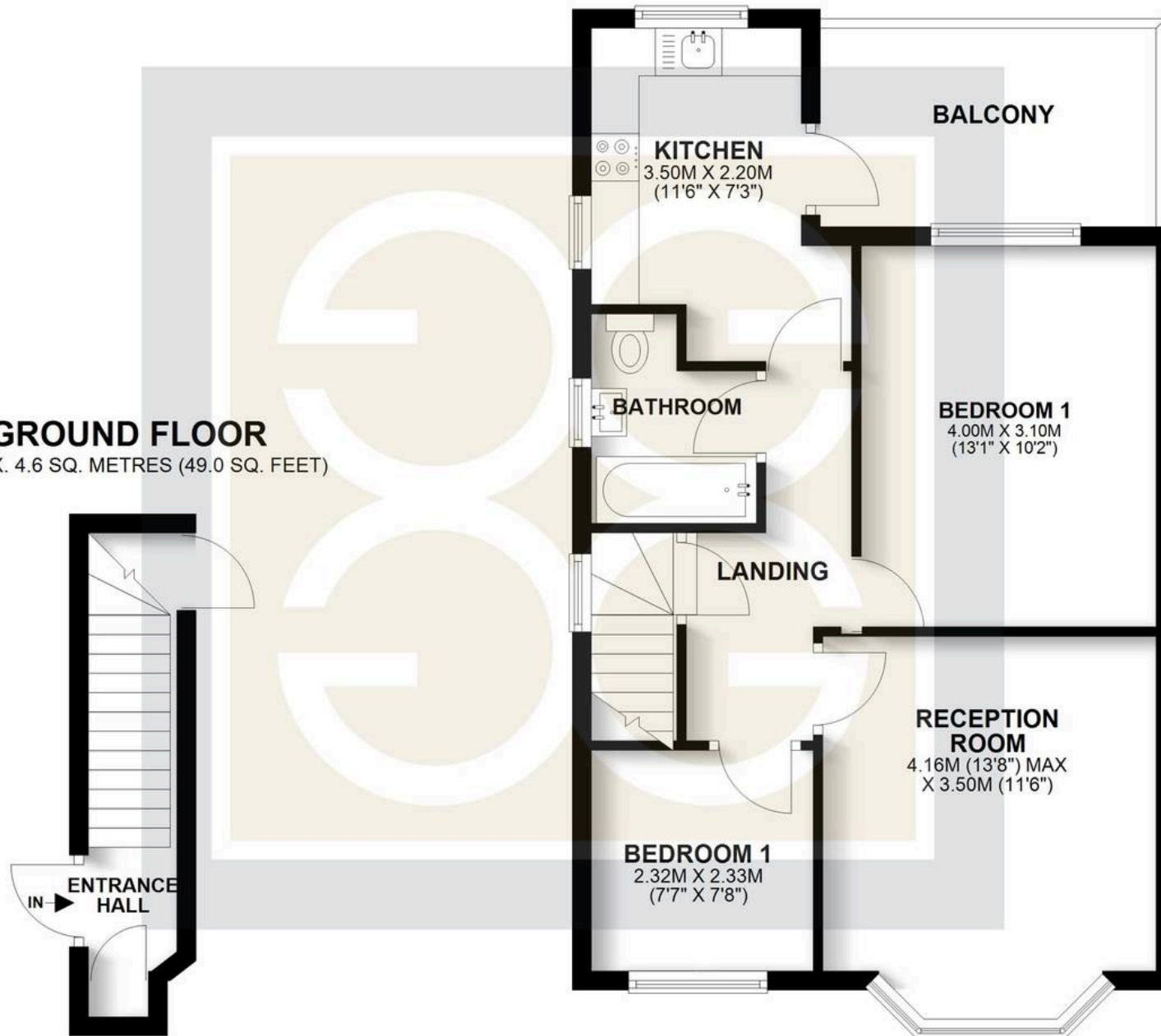
Greenfields

FIRST FLOOR

APPROX. 50.7 SQ. METRES (545.5 SQ. FEET)

GROUND FLOOR

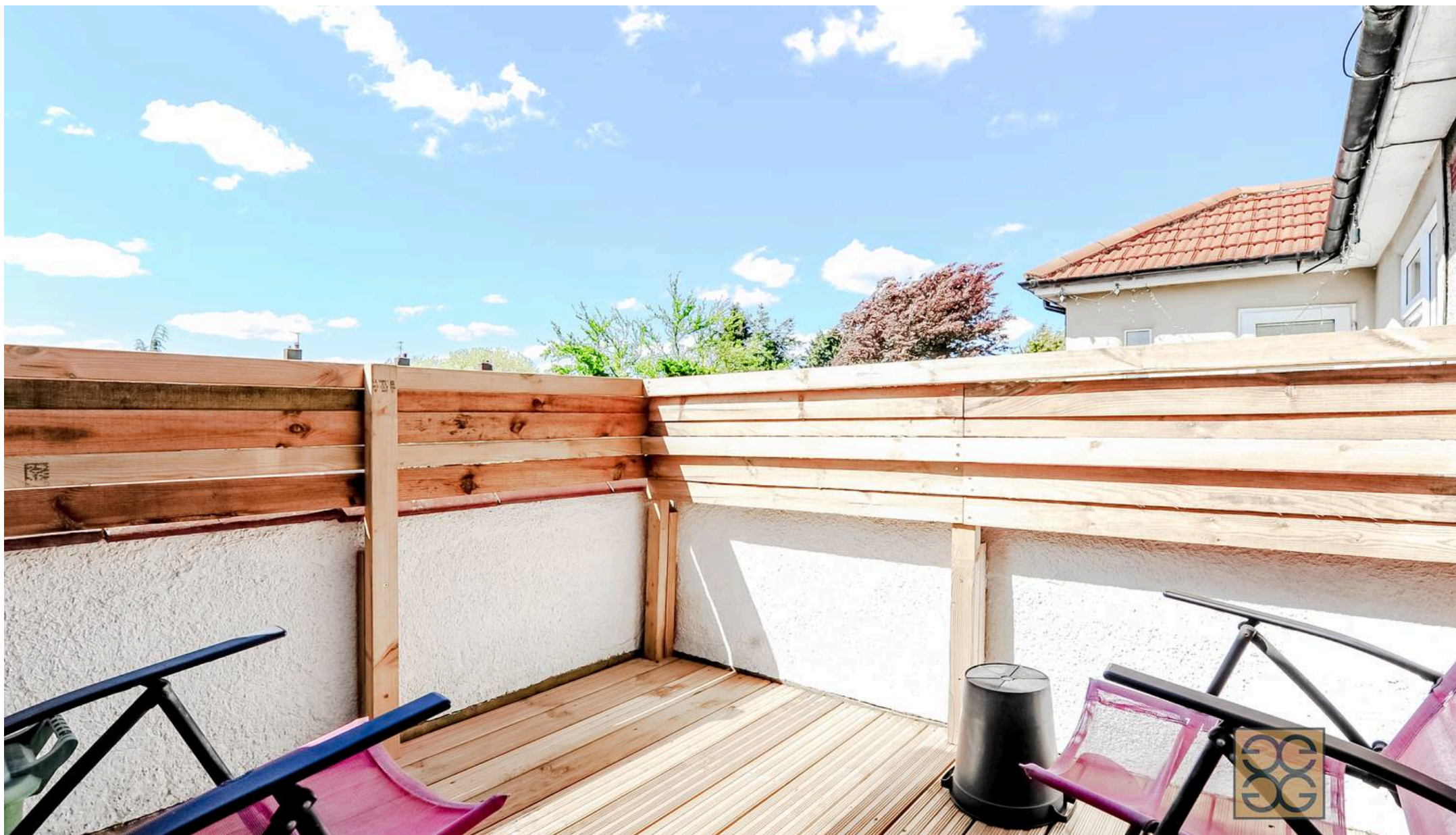
APPROX. 4.6 SQ. METRES (49.0 SQ. FEET)



TOTAL AREA: APPROX. 55.2 SQ. METRES (594.5 SQ. FEET)



Greenfields



Greenfields

Greenfields, 115 Victoria Road – HA4 9BN

01895 628560 • info@greenfieldsproperty.co.uk • www.greenfieldsproperty.co.uk

These particulars, whilst believed to be accurate are set out as a general outline only for guidance and do not constitute any part of an offer or contract. Intending purchasers should not rely on them as statements of representation of fact, but must satisfy themselves by inspection or otherwise as to their accuracy.